

[«Back to Inspection Results](#)**ZIEGLER** **CAT****SPECIFICATIONS****2003 CATERPILLAR 287****Customer Owned Certified****MULTI TERRAIN LOADERS**

<b>Inspection Number:</b>	611093	<b>Serial #:</b>	CNY00387
<b>Date Created:</b>	03/16/2009 07:46:59 AM CDT	<b>Engine Serial #:</b>	unknown
<b>Last Updated:</b>	03/16/2009 10:24:45 AM CDT	<b>Transmission Serial #:</b>	N/A
<b>Originated By:</b>	Adam Kosel	<b>SMU/Hrs:</b>	3599
<b>Inspector:</b>	Adam Kosel	<b>Last Scheduled Oil Sample:</b>	N/A
<b>Reviewer:</b>	N/A	<b>Last Cat Track System Inspection:</b>	N/A
<b>Salesman:</b>	N/A	<b>Last Preventative Maintenance:</b>	N/A
<b>Location:</b>	ELKO, Minnesota, United States	<b>Recommendation:</b>	no recommendation
<b>Asking Price:</b>	N/A		

**Client**

**Name:** State: Unknown  
**Company:** Cat Auction Services **Country:** [Not Specified]

**Features**

- EROPS
- HEATER
- BUCKET
- COUPLER, HYDRAULIC
- HYDRAULICS, STANDARD FLOW

**Condition****GENERAL APPEARANCE**

	Condition - Remarks	Parts	Labor
Radiator Grill & Shroud	Good		
Eng. Enclose Hood / Stack	Good		
Fuel Tank	Good		
Crankcase Guard / Battery Box	Good		
Main Frame Welds	Good		
Bumper	Good		
Counterweight	Good		
Cab or Canopy	Good		
Steps / Ladder	Good		
Grab Irons	Good		
Paint	Good		
Sheet Metal	Good		

	Condition - Remarks	Parts	Labor
S.O.S. Taken	No		
Cleaning Required	No		

**SAFETY ITEMS**

	Condition - Remarks	Parts	Labor
Safety Decals In Place	Yes		
Safety Decals Legible	Yes		
ROPS	Yes		

	Condition - Remarks	Parts	Labor
Horn	Good		
Parking Brake	Good		

**GAUGES, OPERATOR STATION, CONSOLE**

	Condition - Remarks	Parts	Labor
Dash Console	Good		
Meter	Good		
Gauges	Good		
Switches	Good		
Windshield Wipers	Good		
Heater	Good		
Interior Lights	Good		
Seat Cushion / Arm Rest	Poor - Coming apart at seams		
Floor Boards	Good		
EMS Panel / Warnings	Good		
Door Latches	Good		
Glass/Mirrors	Good		
Hydraulic Controls	Good		

	Condition - Remarks	Parts	Labor
Current Parts Manual	No		
Current Safety Manual	No		
Current O&MM	No		
ROPS Certification Plate	Yes		
Back Up Alarm	Yes		

**ENGINE**

	Condition - Remarks	Parts	Labor
Oil Leaks	No		
Blow By	No		
Knocking	No		
Compression in Radiator	No		
Water in Oil	No		
Fluid Levels OK?	Yes		
EPA Decal	No		

	Condition - Remarks	Parts	Labor
--	---------------------	-------	-------

Anti-Freeze Color	Orange		
Oil Pressure (H/L/N)	Normal		
Smoke (B/D/L/W)	Normal		

	Condition - Remarks	Parts	Labor
Operating Condition	Good		
Turbocharger / Blower	Good		
Fuel Injection System	Good		
Governor	Good		
Engine Supports	Good		
Air Cleaners	Good		
Exhaust / Muffler	Good		
Belts / Pulleys	Good		
Oil Filter Condition (CUT)	Good		

**————— COOLING SYSTEM —————**

	Condition - Remarks	Parts	Labor
Radiator	Good		
Coolers	Good		
Hoses	Good		
Water Pump	Good		
Fan	Good		
Fan Drive	Good		

	Condition - Remarks	Parts	Labor
Leaks	No		

**————— ELECTRICAL, STARTING AND CHARGING SYSTEM —————**

	Condition - Remarks	Parts	Labor
Batteries / Cables	Good		
Starter	Good		
Alternator	Good		
Wiring	Good		
Pre-Heater	Good		
Lighting	Good		

	Condition - Remarks	Parts	Labor
Block Heater	Yes		
Ether Aid	No		

**————— TANDEM/GEARS/BEARINGS/CHAINS —————**

	Condition - Remarks	Parts	Labor
Travel Motors	Good		
Travel Pumps	Good		
Travel Controls	Good		
Lines / Linkages	Good		

Operating Condition	Good		
---------------------	------	--	--

**HYDRAULICS**

	Condition - Remarks	Parts	Labor
Operating Condition	Good		
Tank	Good		
Pump & Valves	Good		
Hoses / Lines	Good		
Tilt Cylinder	Good		
Lift Cylinders	Good		

	Condition - Remarks	Parts	Labor
Leaks	No		

**ATTACHMENTS / WORK TOOLS**

	Condition - Remarks	Parts	Labor
Operating Condition	Fair		

**BUCKET**

	Condition - Remarks	Parts	Labor
Cutting Edges	Fair - 25%		
Bucket Bottom	Good		
Bucket Sides	Good		
Bucket Linkage	Good		
Loader Pins & Bushings	Poor - Loose		
Loader Frame	Good		
Quick Coupler	Good		
Multi Purpose Cylinders	Good		

	Condition - Remarks	Parts	Labor
Bucket Capacity	79" Cat GP bkt p/n 199-7720		

**UNDERCARRIAGE**

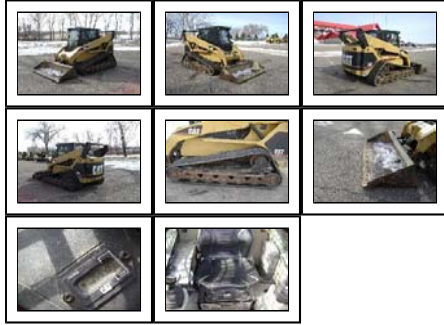
	Condition - Remarks	Parts	Labor
Roller	Poor - Some worn out		
Track / Belt Condition	Poor - 40% tread, lots of cuts/gouges/missing pieces		
Roller Frame	Fair		
Idlers	Poor - worn		
Sprocket	Poor - loose/worn out rollers		

	Condition - Remarks	Parts	Labor
% Worn	40%		

**Photos**

---

Click thumbnails to enlarge.



Caterpillar Confidential: Green. Copyright © 2009, Caterpillar Inc. All Rights Reserved.